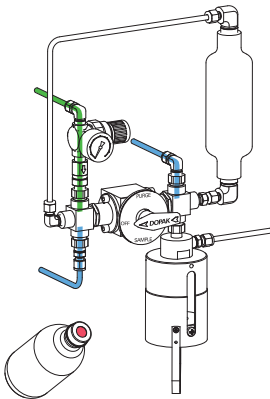
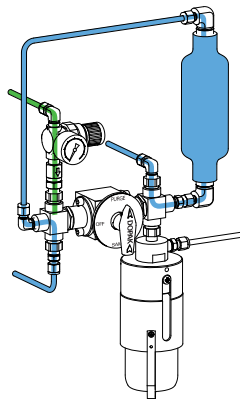


The ability to purge the sample point ensures optimal retrieval of a representative, contamination free sample. The S32 type sampler provides a system purge and needle purge in addition to a fixed sample. The unique design offers a one handle operation by multiple valves, allowing for sampling independent of the process conditions. These features provide sample accuracy and safety.

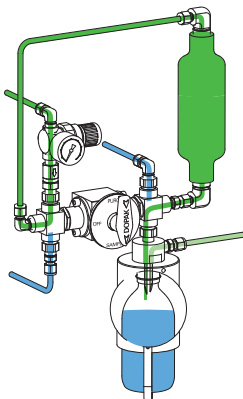
1 OPERATION/FUNCTION



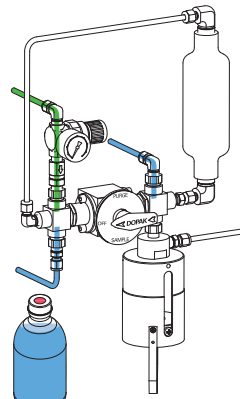
0 - off
Provide a new septum on your sample bottle. Insert the bottle, with cap and septum into the sleeve until the septum is pierced by the needles. Put the bottle retaining clip in place. The valve in the vent line is closed.



1 - system purge
Turn the handle to the "purge" position, allowing a continuous flow of liquid through the sample chamber to ensure representative sampling. This position can be held for any required time.

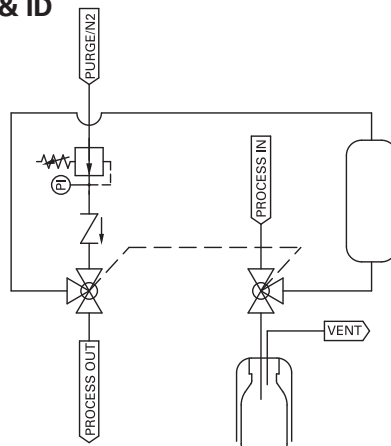


2 - sample
Turn the handle to the "sample" position, allowing the product to flow into the sample bottle. The fixed volume chamber determines the amount of sample. The inert gas will assist the sample to flow into the bottle and will purge the sampler. This position can be held for any required time.



3 - off
Turn the handle to the "off" position. Remove the bottle retaining clip and pull the bottle out from the sleeve. The septum reseals automatically. Put a new bottle in place.

2 TYPICAL P & ID



Fixed volume (E5)



